

# Construction Industry Snapshot

Issued: December 2016  
(based on November Starts Stats)

## ConstructConnect's November Starts Stumbled by Nearly One-quarter

ConstructConnect announced today that November's level of U.S. construction starts, excluding residential activity, was \$23.4 billion, a plunge of -22.2% versus the dollar volume in the period before.

October-to-November's long-term average decline, on account of seasonality, has been a much smaller -2%. (Looking ahead, November to December is usually a bigger drop, -5.0%).

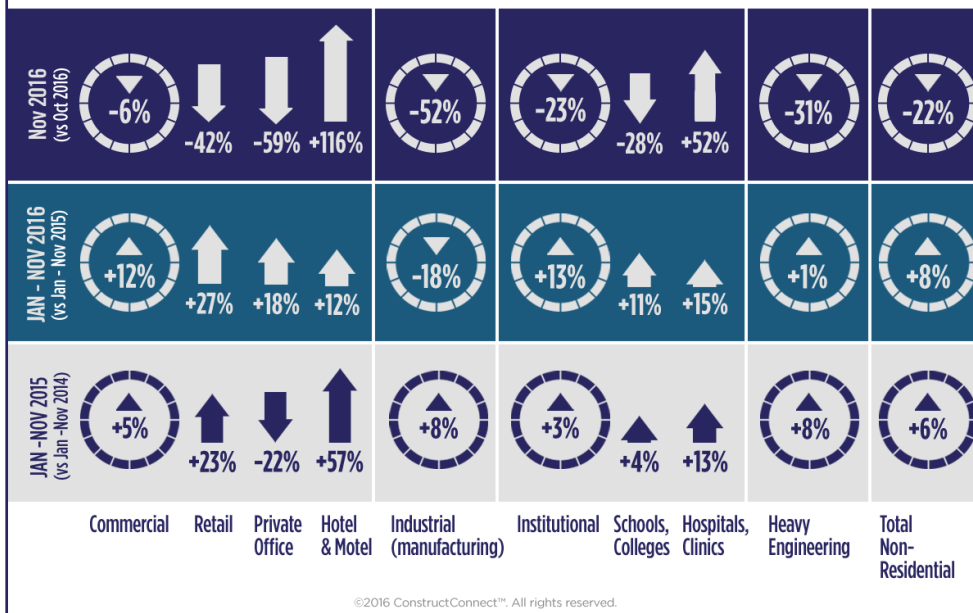


## Contents

- Commentary and latest starts statistics.. 2
- INSIGHT** view of starts statistics ..... 3
- “Top Ten” featured construction projects.. 4
- Trend graphs for 12 key categories..... 5
- Regional starts table ..... 6
- Detailed national table ..... 7

## November's Notable Points

- November's pullback in total month-to-month starts (-22.2%) resulted from widespread declines among the three major type-of-structure categories. Heavy engineering/civil (-31.1%) was worst. Institutional (-23.0%) was also down markedly. Commercial (-6.3%) wasn't as bad.
- As for year-to-date starts in 2016 (+8.0%), there have been almost equal measures of improvement in institutional (+12.9%) and commercial (+12.1%) work, with engineering staying essentially flat (+0.6%). Industrial (-18.0%) has strayed off the path and fallen behind.



3825 Edwards Road, Ste. 800  
Cincinnati, OH 45209  
P. 1-800-364-2059  
[www.constructconnect.com/blog](http://www.constructconnect.com/blog)

For more information or media inquiries please contact:  
Deborah Reale, Senior Marketing Manager, Public Relations  
and Social Networking, ConstructConnect  
P. 404-409-4301 | [deborah.reale@constructconnect.com](mailto:deborah.reale@constructconnect.com)

## ConstructConnect's November Starts Stumbled by Nearly One-quarter

ConstructConnect™ announced today that November's level of U.S. construction starts, excluding residential activity, was \$23.4 billion, a plunge of -22.2% versus the dollar volume in the period before. October-to-November's long-term average decline, on account of seasonality, has been a much smaller -2%. (Looking ahead, November to December is usually a bigger drop, -5.0%).

November of this year compared with November of last year was also a decline, but one that was less dramatic -8.5%. Year-to-date starts, though, stayed on the positive side of the ledger, at +8.0% versus their volume through the same January-to-November time frame of 2015.

The monthly starts statistics have been sharply up and down of late. They were -24.3% in September, but +16.5% in October. Compared with November's average performance during the previous five years, 2011 to 2015, the latest result was remarkably consistent, +1.6%.

The starts figures throughout this report are not seasonally adjusted (NSA). Nor are they altered for inflation. They are expressed in what are termed 'current' as opposed to 'constant' dollars.

'Non-residential building' plus 'engineering/civil' work accounts for a considerably larger share of total construction than residential activity. The former's combined proportion of total put-in-place construction in the Census Bureau's October report was 60%; the latter's was 40%.

ConstructConnect's construction starts are leading indicators for the Census Bureau's capital investment or put-in-place series. Also, the reporting period for starts (i.e., November 2016) is one month ahead of the reporting period for the investment series (i.e., October 2016.)

After month-to-month net jobs gains in September (+26,000) and October (+14,000), employment in construction rose again in November (+19,000), according to the latest *Employment Situation Report* from the Bureau of Labor Statistics (BLS). The last time the sector's payroll contracted was in August, -6,000. The year-over-year employment gain in construction has been +2.4%, which has been faster than the total U.S. jobs advance of +1.6%. But job creation in construction has been slowing since December 2014's best rise of +6.1%.

There are two other data series with close ties to construction work that appear in Table B-1 of the monthly *Employment Situation Report*. As a 'leading' indicator, — i.e., before there can be field activity, projects must be rendered into working drawings by design professionals — the total number of jobs in architectural and engineering services in November was +2.1% year over year. In nominal terms, they have now climbed to a perch near the same level as when they were at their previous peak in February 2008. And as a 'coincident' indicator, the total number of positions at retail outlets specializing in selling building materials and supplies was +3.5%.

Construction's November jobless rate (NSA) was 5.7%, down from 6.2% 12 months ago.

November's pullback in total month-to-month starts (-22.2%) resulted from widespread declines among the three major type-of-structure categories. Heavy engineering/civil (-31.1%) was worst. Institutional (-23.0%) was also down markedly. Commercial (-6.3%) wasn't as bad. Smaller-volume industrial (-52.4%) was less by half, but this is a category that often displays wide swings in any given month, depending on the presence or absence of a mega project or two.

November 2016's -8.5% descent relative to November 2015 was also led by engineering (-18.1%), followed by institutional (-7.7%) and commercial (-1.6%). Industrial was +64.1%.

As for year-to-date starts in 2016 (+8.0%), there have been almost equal measures of improvement in institutional (+12.9%) and commercial (+12.1%) work, with engineering staying essentially flat (+0.6%). Industrial (-18.0%) has strayed off the path and fallen behind.

At nearly 60%, the 'schools/colleges' sub-category has dominated institutional work so far this year. November, however, was a spotty month for starts on educational facilities. They were -28.2% month over month (m/m); and -15.7% year over year (y/y); but +10.6% year to date (ytd).

The next biggest slice of the institutional pie belongs to 'hospital/clinic' starts (a 16% share). In the latest month, they surged ahead +52.2% m/m, which lifted them to +14.9% ytd, even though they fell -14.4% compared with November of last year. 'Nursing and assisted living' starts were -16.8% m/m in the latest period, but were an impressive +53.4% y/y and +41.8% ytd.

Within commercial work, 'retail/shopping' starts have occupied first place (with a 26% share) among sub-categories with 2016 almost over. In November, they faltered -42.4% m/m and -30.3% y/y, but were still up +26.8% ytd. 'Private offices' (a 16% share) displayed a similar pattern: -58.9% m/m; and -10.5% y/y; but a resounding +17.6% ytd. 'Government offices' (an 11% portion) were -7.3% m/m; but +25.5% y/y; and +17.6% ytd. 'Hotel/motel' starts (a 14% slice) were uniformly and pleasingly upbeat: +115.9% m/m; +65.9% y/y; and +12.2% ytd.

'Road/highway' starts are the biggest sub-component (a 43% share) of the heavy engineering type-of-structure category. In the latest month, they disappointed m/m (-33.6%) and

**TABLE 1: VALUE OF UNITED STATES CONSTRUCTION STARTS — NOVEMBER 2016 YEAR TO DATE (ConstructConnect™)**

	Jan-Nov 16 (\$ billions)	% Change Jan-Nov 16 vs Jan-Nov 15	% Change Nov 16 vs Nov 15	% Change Nov 16 vs Oct 16
Hotel/Motel	15.001	12.2%	65.9%	115.9%
Retail/Shopping	27.667	26.8%	-30.3%	-42.4%
Parking Garage	4.262	40.9%	128.9%	61.1%
Amusement	5.718	-0.3%	-9.5%	4.6%
Private Office	17.191	17.6%	-10.5%	-58.9%
Government Office	11.383	17.6%	25.5%	-7.3%
Laboratory	2.043	-1.2%	144.3%	130.3%
Warehouse	10.272	-8.4%	-61.4%	-25.5%
Miscellaneous Commercial *	11.540	-5.3%	57.9%	75.7%
<b>COMMERCIAL (big subset)</b>	<b>105.077</b>	<b>12.1%</b>	<b>-1.6%</b>	<b>-6.3%</b>
<b>INDUSTRIAL (Manufacturing)</b>	<b>9.177</b>	<b>-18.0%</b>	<b>64.1%</b>	<b>-52.4%</b>
Religious	1.395	-5.4%	45.7%	12.1%
Hospital/Clinic	16.550	14.4%	-14.4%	52.2%
Nursing/Assisted Living	6.871	41.8%	53.4%	-16.8%
Library/Museum	2.416	2.1%	-43.8%	-54.7%
Fire/Police/Courthouse/Prison	5.456	-5.3%	-45.7%	-49.9%
Military	5.940	8.4%	3.5%	-43.7%
School/College	60.557	10.6%	-15.7%	-28.2%
Miscellaneous Medical	4.707	62.1%	215.4%	-32.5%
<b>INSTITUTIONAL</b>	<b>103.892</b>	<b>12.9%</b>	<b>-7.7%</b>	<b>-23.0%</b>
Miscellaneous Non-residential	7.591	73.6%	29.8%	-23.7%
<b>NON-RESIDENTIAL BUILDING</b>	<b>225.737</b>	<b>12.2%</b>	<b>-3.1%</b>	<b>-17.1%</b>
Airport	6.515	47.8%	77.3%	-54.3%
Road/Highway	49.192	2.4%	-15.0%	-33.6%
Bridge	13.232	17.1%	-25.9%	-13.0%
Dam/Marine	3.529	-36.3%	-34.9%	-37.4%
Water/Sewage	28.505	7.1%	-19.4%	-30.6%
Miscellaneous Civil (power, etc.)	14.134	-23.7%	-28.1%	-17.9%
<b>HEAVY ENGINEERING (Civil)</b>	<b>115.107</b>	<b>0.6%</b>	<b>-18.1%</b>	<b>-31.1%</b>
<b>TOTAL NON-RESIDENTIAL</b>	<b>340.844</b>	<b>8.0%</b>	<b>-8.5%</b>	<b>-22.2%</b>

\* Includes transportation terminals and sports arenas.

Source: ConstructConnect Research Group/Table: ConstructConnect.

y/y (-15.0%), but they retained an improvement ytd (+2.4%). 'Bridges' likewise faltered m/m (-13.0%) and y/y (-25.9%), while staying better ytd (+17.1%). 'Water/sewage' starts (with a 25% or one-quarter share) also followed a familiar route; -30.6% m/m; and -19.4% y/y; but +7.1% ytd.

Table 2 on page three re-orders and provides more detail on some of the type-of-structure categories in Table 1. The reasons for this 'second view' are set out in the footnote.

Among the 12-month moving average trend graphs on page 5, the 'miscellaneous civil (e.g., power, etc.)' curve has seriously nosedived over the past several months, 'retail' has more recently retreated after a lofty climb and private office buildings have eased somewhat. 'Schools/colleges,' 'roads/highways' and 'bridges' appear uncertain as to the direction to take.

With respect to compensation increases as reported in November's *Employment Situation Report*, construction nearly matched or bettered economy-wide gains. Including supervisory personnel, average year-over-year earnings increases were +2.5% hourly and +2.2% weekly for all jobs. For the 'hard hat' contingent on its own, they were +2.4% and +2.7% respectively. For production workers only (i.e., omitting bosses), the all-jobs earnings jumps were +2.4% hourly and +2.1% weekly. Construction was a nice step ahead at +3.2% both hourly and weekly.

The value of construction starts each month is summarized from ConstructConnect's database of all active construction projects in the U.S. Missing project values are estimated with the help of RSMMeans' building cost models.

ConstructConnect's non-residential construction starts series, because it is comprised of total-value estimates for individual projects, some of which are ultra-large, has a history of being more volatile than many other leading indicators for the economy. ♦

Alex Carrick

A "start" is determined by taking the announced bid date and adding a short time lag (30 to 60 days). ConstructConnect continues to follow the project via its network of researchers. If it is abandoned or re-bid, the start date is updated to reflect the new information.

Alex Carrick is Chief Economist for ConstructConnect. He has delivered presentations throughout North America on the U.S., Canadian and world construction outlooks. Mr. Carrick has been with the company since 1985. Links to his numerous articles are featured on Twitter @ConstructConnx, which has 44,000 followers.

**TABLE 2: VALUE OF UNITED STATES CONSTRUCTION STARTS —  
ConstructConnect™ INSIGHT VERSION — NOVEMBER 2016  
ARRANGED TO MATCH THE ALPHABETICAL CATEGORY DROP-DOWN MENUS IN INSIGHT**

	Jan-Nov 16 (\$ billions)	% Change Jan-Nov 16 vs Jan-Nov 15	% Change Nov 16 vs Nov 15	% Change Nov 16 vs Oct 16
<b>Summary</b>				
CIVIL	115.107	0.6%	-18.1%	-31.1%
NON-RESIDENTIAL BUILDING	225.737	12.2%	-3.1%	-17.1%
RESIDENTIAL	225.090	6.7%	-0.8%	-17.3%
<b>GRAND TOTAL</b>	<b>565.934</b>	<b>7.5%</b>	<b>-5.2%</b>	<b>-20.1%</b>
<b>Verticals</b>				
Airport	6.515	47.8%	77.3%	-54.3%
All Other Civil	13.299	-22.1%	-28.7%	-6.8%
Bridges	13.232	17.1%	-25.9%	-13.0%
Dams / Canals / Marine Work	3.529	-36.3%	-34.9%	-37.4%
Power Infrastructure	0.835	-41.7%	-13.9%	-76.9%
Roads	49.192	2.4%	-15.0%	-33.6%
Water and Sewage Treatment	28.505	7.1%	-19.4%	-30.6%
<b>CIVIL</b>	<b>115.107</b>	<b>0.6%</b>	<b>-18.1%</b>	<b>-31.1%</b>
Offices (private)	17.191	17.6%	-10.5%	-58.9%
Parking Garages	4.262	40.9%	128.9%	61.1%
Transportation Terminals	3.435	-43.8%	-82.6%	-77.2%
<b>Commercial (small subset)</b>	<b>24.888</b>	<b>4.7%</b>	<b>-17.9%</b>	<b>-50.0%</b>
Amusement	5.718	-0.3%	-9.5%	4.6%
Libraries / Museums	2.416	2.1%	-43.8%	-54.7%
Religious	1.395	-5.4%	45.7%	12.1%
Sports Arenas / Convention Centers	8.105	33.5%	369.1%	290.7%
<b>Community</b>	<b>17.634</b>	<b>12.7%</b>	<b>76.8%</b>	<b>68.1%</b>
College / University	20.516	10.9%	-8.1%	-46.5%
Elementary / Pre School	18.499	4.9%	-19.9%	-6.5%
Jr / Sr High School	20.240	16.8%	-15.3%	-9.3%
Special / Vocational	1.303	0.9%	-67.5%	-66.5%
<b>Educational</b>	<b>60.557</b>	<b>10.6%</b>	<b>-15.7%</b>	<b>-28.2%</b>
Courthouses	1.178	6.0%	-55.6%	-28.2%
Fire and Police Stations	2.515	33.1%	-41.1%	-64.6%
Government Offices	11.383	17.6%	25.5%	-7.3%
Prisons	1.763	-36.1%	-45.6%	-16.7%
<b>Government</b>	<b>16.839</b>	<b>9.1%</b>	<b>-10.8%</b>	<b>-26.7%</b>
Industrial Labs / Labs / School Labs	2.043	-1.2%	144.3%	130.3%
Manufacturing	9.177	-18.0%	64.1%	-52.4%
Warehouses	10.272	-8.4%	-61.4%	-25.5%
<b>Industrial</b>	<b>21.492</b>	<b>-12.2%</b>	<b>-45.6%</b>	<b>-31.6%</b>
Hospitals / Clinics	16.550	14.9%	-14.4%	52.2%
Medical Misc.	4.707	62.1%	215.4%	-32.5%
Nursing Homes	6.871	41.8%	53.4%	-16.8%
<b>Medical</b>	<b>28.127</b>	<b>26.9%</b>	<b>13.9%</b>	<b>5.2%</b>
<b>Military</b>	<b>5.940</b>	<b>8.4%</b>	<b>3.5%</b>	<b>-43.7%</b>
Hotels	15.001	12.2%	65.9%	115.9%
Retail Misc.	7.591	73.6%	29.8%	-23.7%
Shopping	27.667	26.8%	-30.3%	-42.4%
<b>Retail</b>	<b>50.259</b>	<b>27.1%</b>	<b>12.1%</b>	<b>0.9%</b>
<b>NON-RESIDENTIAL BUILDING</b>	<b>225.737</b>	<b>12.2%</b>	<b>-3.1%</b>	<b>-17.1%</b>
Multi-Family	50.785	1.4%	-21.8%	-24.5%
Single-Family	174.305	8.3%	7.5%	-14.9%
<b>RESIDENTIAL</b>	<b>225.090</b>	<b>6.7%</b>	<b>-0.8%</b>	<b>-17.3%</b>
<b>NON-RESIDENTIAL</b>	<b>340.844</b>	<b>8.0%</b>	<b>-8.5%</b>	<b>-22.2%</b>
<b>GRAND TOTAL</b>	<b>565.934</b>	<b>7.5%</b>	<b>-5.2%</b>	<b>-20.1%</b>

Table 1 conforms to the type-of-structure ordering adopted by many firms and organizations in the industry. Specifically, it breaks non-residential building into ICI work (i.e., industrial, commercial and institutional), since each has its own set of economic and demographic drivers. Table 2 presents an alternative, perhaps more user-friendly and intuitive type-of-structure ordering that matches how the data appears in ConstructConnect's on-line product 'Insight'.

Source: ConstructConnect/Table: ConstructConnect.

**TABLE 3: ConstructConnect's TOP 10 FEATURED PROJECTS FOR NOVEMBER 2016\***

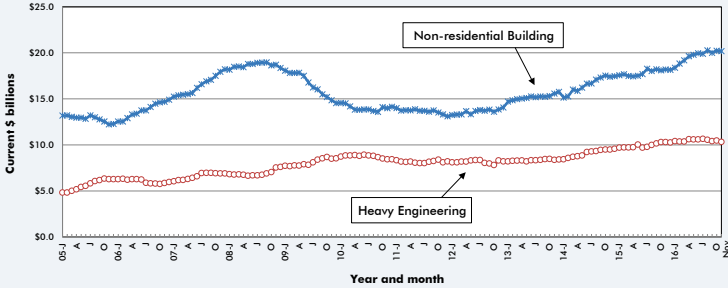
REGION (EAST TO WEST)	TYPE OF CONSTRUCTION	DESCRIPTION	SQUARE FEET 000S	DOLLARS 000,000S
<b>New York</b> Brooklyn	Engineering/Civil	S-32176-Signal System Modernization MTA - New York City Transit	*	\$98
<b>Maryland</b> Baltimore	Engineering/Civil	Druid Lake Finished Water Tanks (1 structure) Druid Lake Baltimore City DPW Water & Wastewater	*	\$134
<b>Virginia</b> Richmond	Residential	Armstrong High School Demolition Package N 31st St at Nine Mile Rd The Community Builders	997	\$110
<b>Florida</b> Naples	Residential	Tract 54 at Lely Resort Apartments (2 structures; 304 units; 6 stories) Grand Lely Dr and Rattlesnake Hammock Rd Stock Development	436	\$120
Miami	Commercial	The Mall at Miami World Center (1 structure) 700 NE 2nd Ave Taubman Centers, Inc	430	\$100
<b>Tennessee</b> Knoxville	Residential	Waterstone Apartments (1 structure; 252 units; 4 stories) 10105 Hardin Valley Rd Ball Homes	679	\$85
<b>Wisconsin</b> Milwaukee	Institutional	Marquette University Dormitory (1 structure; 750 units; 8 stories) Wells St Marquette University Facilities Services Department	466	\$96
<b>Arizona</b> Phoenix	Engineering/Civil	Phoenix Sky Harbor International Airport (PHX) Phase 2 - Terminal 3 South Concourse (1 structure) 3400 East Sky Harbor Blvd City of Phoenix - Design and Construction Management	*	\$116
<b>California</b> San Francisco	Residential	Oceanwide Center (9 structures; 794 units; 80-plus stories) 50 First St and 526 Mission St TMG Partners	2,065	\$1,600
<b>Hawaii</b> Honolulu	Residential	Kapiolani Residence (1 structure; 485 units; 45 stories) 1391 Kapiolani Blvd Samkoo Pacific LLC	1,518	\$190
<b>TOTALS:</b>			<b>6,591</b>	<b>\$2,649</b>

\*A square footage measure does not apply for alteration and engineering/civil work.

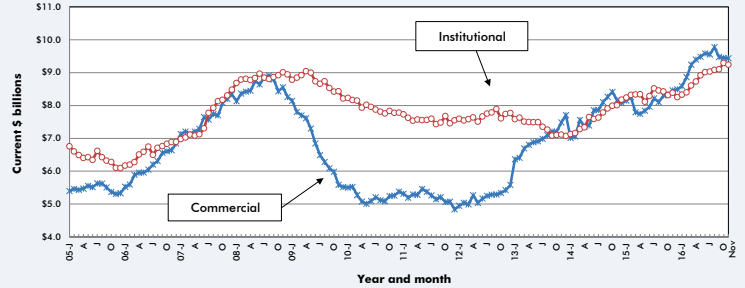
\*ConstructConnect™ merges four legacy companies. As part of the data integration process, ConstructConnect™ is moving from an estimated start date (i.e., 30-60 days after bid date) for each project to an assigned start date. The transition will be complete by the end of 2016. Until then, Table 3 will highlight featured projects rather than Top 10 starts.

Source: ConstructConnect/Table: ConstructConnect.

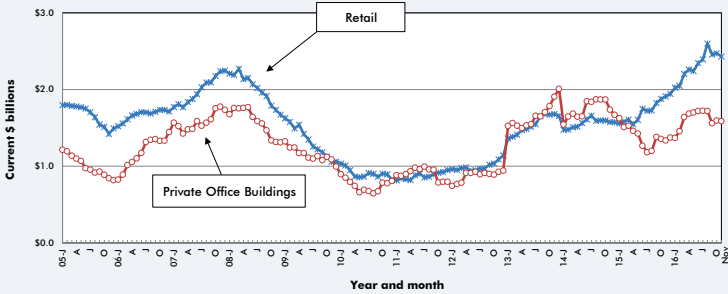
**GRAPH 1: U.S. NON-RESIDENTIAL CONSTRUCTION STARTS — ConstructConnect™ (12-MONTH MOVING AVERAGES)**



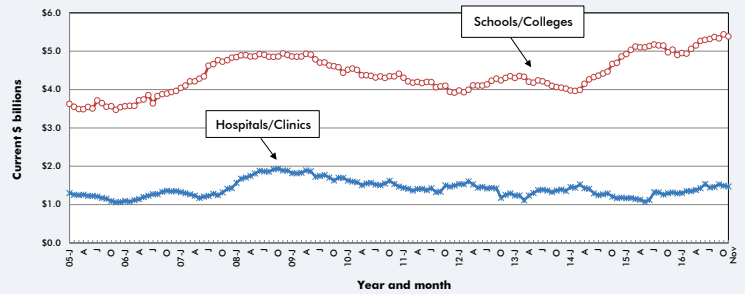
**GRAPH 2: U.S. COMMERCIAL AND INSTITUTIONAL CONSTRUCTION STARTS — ConstructConnect™ (12-MONTH MOVING AVERAGES)**



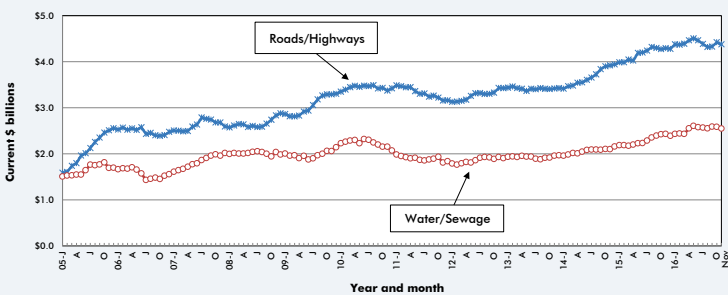
**GRAPH 3: U.S. RETAIL AND PRIVATE OFFICE BUILDING CONSTRUCTION STARTS — ConstructConnect™ (12-MONTH MOVING AVERAGES)**



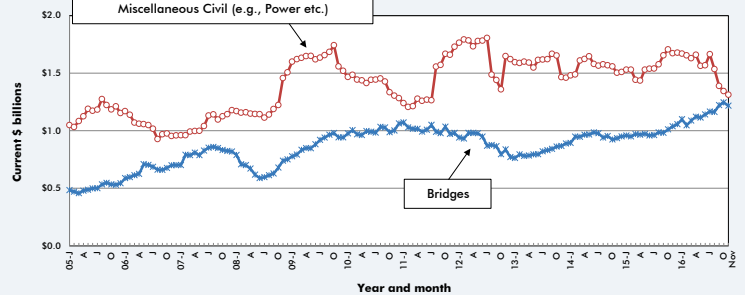
**GRAPH 4: U.S. HOSPITAL/CLINIC AND SCHOOL/COLLEGE CONSTRUCTION STARTS — ConstructConnect™ (12-MONTH MOVING AVERAGES)**



**GRAPH 5: U.S. ROAD/HIGHWAY AND WATER/SEWAGE CONSTRUCTION STARTS — ConstructConnect™ (12-MONTH MOVING AVERAGES)**



**GRAPH 6: U.S. BRIDGES AND MISCELLANEOUS CIVIL CONSTRUCTION STARTS — ConstructConnect™ (12-MONTH MOVING AVERAGES)**



Source: ConstructConnect/Charts: ConstructConnect.

**TABLE 4: U.S. YEAR-TO-DATE REGIONAL STARTS  
NON-RESIDENTIAL CONSTRUCTION\* — ConstructConnect™**

	Jan-Nov 2015	Jan-Nov 2016	% Change
Connecticut	\$2,993,773,789	\$2,936,547,051	-1.9%
Maine	\$895,857,654	\$820,547,384	-8.4%
Massachusetts	\$7,447,936,938	\$8,902,888,915	19.5%
New Hampshire	\$931,814,589	\$1,275,169,470	36.8%
Rhode Island	\$977,921,457	\$645,901,586	-34.0%
Vermont	\$743,105,372	\$649,212,924	-12.6%
<b>Total New England</b>	<b>\$13,990,409,799</b>	<b>\$15,230,267,330</b>	<b>8.9%</b>
New Jersey	\$6,329,884,570	\$5,775,208,601	-8.8%
New York	\$24,052,423,170	\$20,062,750,839	-16.6%
Pennsylvania	\$11,156,749,068	\$11,426,054,452	2.4%
<b>Total Middle Atlantic</b>	<b>\$41,539,056,808</b>	<b>\$37,264,013,892</b>	<b>-10.3%</b>
<b>TOTAL NORTHEAST</b>	<b>\$55,529,466,607</b>	<b>\$52,494,281,222</b>	<b>-5.5%</b>
Illinois	\$12,123,499,941	\$10,612,072,079	-12.5%
Indiana	\$3,929,431,963	\$6,010,946,358	53.0%
Michigan	\$7,318,632,692	\$8,501,683,533	16.2%
Ohio	\$10,440,673,415	\$11,275,464,190	8.0%
Wisconsin	\$5,638,764,770	\$6,662,875,837	18.2%
<b>Total East North Central</b>	<b>\$39,451,002,781</b>	<b>\$43,063,041,997</b>	<b>9.2%</b>
Iowa	\$4,450,159,831	\$4,259,471,377	-4.3%
Kansas	\$3,964,137,996	\$3,343,839,649	-15.6%
Minnesota	\$5,616,289,022	\$6,680,791,849	19.0%
Missouri	\$5,023,512,407	\$5,810,791,039	15.7%
Nebraska	\$2,148,002,590	\$2,684,103,270	25.0%
North Dakota	\$3,532,432,808	\$2,061,020,467	-41.7%
South Dakota	\$1,838,570,902	\$1,287,513,312	-30.0%
<b>Total West North Central</b>	<b>\$26,573,105,556</b>	<b>\$26,127,530,963</b>	<b>-1.7%</b>
<b>TOTAL MIDWEST</b>	<b>\$66,024,108,337</b>	<b>\$69,190,572,960</b>	<b>4.8%</b>
Delaware	\$537,255,909	\$767,995,693	42.9%
District of Columbia	\$1,452,412,717	\$3,167,427,639	118.1%
Florida	\$15,910,624,689	\$22,197,249,320	39.5%
Georgia	\$7,403,039,104	\$11,437,312,582	54.5%
Maryland	\$5,082,173,004	\$9,161,141,726	80.3%
North Carolina	\$8,956,838,199	\$9,760,488,114	9.0%
South Carolina	\$4,334,821,708	\$5,937,414,171	37.0%
Virginia	\$6,838,746,575	\$9,592,213,737	40.3%
West Virginia	\$1,678,748,952	\$1,863,449,468	11.0%
<b>Total South Atlantic</b>	<b>\$52,194,660,857</b>	<b>\$73,884,692,450</b>	<b>41.6%</b>
Alabama	\$3,601,268,176	\$5,318,672,539	47.7%
Kentucky	\$4,231,290,610	\$4,817,751,249	13.9%
Mississippi	\$2,909,825,944	\$2,301,854,681	-20.9%
Tennessee	\$5,505,950,489	\$5,430,681,300	-1.4%
<b>Total East South Central</b>	<b>\$16,248,335,219</b>	<b>\$17,868,959,769</b>	<b>10.0%</b>
Arkansas	\$2,580,949,049	\$2,754,312,577	6.7%
Louisiana	\$9,592,546,261	\$3,224,623,258	-66.4%
Oklahoma	\$4,515,509,975	\$5,765,608,940	27.7%
Texas	\$37,372,769,641	\$42,804,481,633	14.5%
<b>Total West South Central</b>	<b>\$54,061,774,926</b>	<b>\$54,549,026,408</b>	<b>0.9%</b>
<b>TOTAL SOUTH</b>	<b>\$122,504,771,002</b>	<b>\$146,302,678,627</b>	<b>19.4%</b>
Arizona	\$2,850,660,154	\$5,190,694,574	82.1%
Colorado	\$6,443,614,303	\$5,121,046,379	-20.5%
Idaho	\$1,409,928,576	\$1,190,679,439	-15.6%
Montana	\$1,199,182,466	\$1,066,914,857	-11.0%
Nevada	\$6,761,300,547	\$3,113,140,636	-54.0%
New Mexico	\$1,709,396,603	\$1,542,108,320	-9.8%
Utah	\$3,504,698,007	\$4,289,579,385	22.4%
Wyoming	\$2,079,685,532	\$1,168,687,635	-43.8%
<b>Total Mountain</b>	<b>\$25,958,466,188</b>	<b>\$22,682,851,225</b>	<b>-12.6%</b>
Alaska	\$1,667,222,003	\$1,418,510,343	-14.9%
California	\$30,083,807,186	\$32,648,816,309	8.5%
Hawaii	\$2,722,902,350	\$2,617,810,693	-3.9%
Oregon	\$3,787,070,910	\$4,827,075,195	27.5%
Washington	\$7,387,432,292	\$8,661,647,136	17.2%
<b>Total Pacific</b>	<b>\$45,648,434,741</b>	<b>\$50,173,859,676</b>	<b>9.9%</b>
<b>TOTAL WEST</b>	<b>\$71,606,900,929</b>	<b>\$72,856,710,901</b>	<b>1.7%</b>
<b>TOTAL U.S.</b>	<b>\$315,665,246,875</b>	<b>\$340,844,243,710</b>	<b>8.0%</b>

\*Figures above are comprised of non-res building and engineering (i.e., residential is omitted).

Source: ConstructConnect/Table: ConstructConnect.



**TABLE 5: VALUE OF U.S. NATIONAL CONSTRUCTION STARTS — NOVEMBER 2016 — ConstructConnect™**  
**BILLIONS OF CURRENT \$\$, NOT SEASONALLY ADJUSTED (NSA)**

	Latest month actuals			Moving averages (placed in end month)						Year to Date	
	Sep 16	Oct 16	Nov 16	Sep 16	3-months Oct 16	Nov 16	Sep 16	12-months Oct 16	Nov 16	Nov 2015	Nov 2016
Single Family	15.866	17.472	14.869	16.264	16.354	16.076	15.190	15.461	15.547	160.903	174.305
month-over-month % change	1.2%	10.0%	-14.9%	-3.7%	0.6%	-1.7%	0.2%	1.8%	0.6%		
year-over-year % change	2.3%	22.9%	7.5%	0.7%	7.5%	10.7%	7.8%	9.3%	8.2%	15.1%	8.3%
Apartment	3.908	5.670	4.279	3.984	4.511	4.619	4.639	4.763	4.664	50.085	50.785
month-over-month % change	-1.2%	45.1%	-24.5%	-2.0%	13.2%	2.4%	0.1%	2.7%	-2.1%		
year-over-year % change	1.9%	35.7%	-21.8%	-1.3%	10.6%	2.7%	5.4%	6.3%	4.1%	1.8%	-1.4%
<b>TOTAL RESIDENTIAL</b>	19.794	23.143	19.148	20.248	20.866	20.695	19.829	20.224	20.211	210.988	225.090
month-over-month % change	0.7%	16.9%	-17.3%	-3.4%	3.1%	-0.8%	0.2%	2.0%	-0.1%		
year-over-year % change	2.2%	25.8%	-0.8%	-2.0%	8.2%	8.8%	7.2%	8.6%	7.3%	11.7%	6.7%
Hotel/Motel	1.046	0.913	1.972	1.440	1.051	1.311	1.292	1.319	1.384	13.367	15.001
month-over-month % change	-12.4%	-12.7%	115.9%	4.4%	-27.0%	24.7%	1.1%	2.1%	4.9%		
year-over-year % change	19.9%	54.2%	65.9%	52.4%	19.1%	48.1%	11.8%	16.8%	18.8%	56.6%	12.2%
Retail/Shopping	1.473	2.032	1.171	2.631	2.554	1.559	2.457	2.473	2.431	21.813	27.667
month-over-month % change	-64.6%	37.9%	-42.4%	31.1%	-2.9%	-39.0%	-5.5%	0.7%	-1.7%		
year-over-year % change	-53.7%	11.0%	-30.3%	20.1%	14.6%	-30.2%	34.6%	31.8%	27.1%	22.9%	26.8%
Parking Garages	0.243	0.243	0.392	0.300	0.236	0.293	0.340	0.348	0.366	3.025	4.262
month-over-month % change	9.9%	0.3%	61.1%	-26.2%	-21.6%	24.2%	2.9%	2.3%	5.3%		
year-over-year % change	88.2%	62.3%	128.9%	-37.0%	99.7%	95.1%	20.4%	22.1%	30.4%	69.2%	40.9%
Amusement	0.370	0.414	0.434	0.428	0.394	0.406	0.523	0.519	0.516	5.732	5.718
month-over-month % change	-6.9%	12.0%	4.6%	0.7%	-8.0%	3.1%	1.7%	-0.8%	-0.7%		
year-over-year % change	-10.7%	32.7%	9.5%	0.7%	-2.7%	0.9%	-1.0%	1.7%	0.8%	-54.3%	-0.3%
Office	1.565	1.889	0.774	1.265	1.601	1.410	1.560	1.596	1.588	14.622	17.191
month-over-month % change	16.0%	20.7%	-58.9%	2.0%	26.6%	-11.9%	-9.3%	2.3%	-0.5%		
year-over-year % change	-55.0%	29.9%	-10.5%	-33.7%	-24.1%	-27.0%	12.9%	17.7%	18.9%	-21.6%	17.6%
Governmental Offices	0.742	0.825	0.765	1.077	1.001	0.777	0.978	0.984	0.997	9.681	11.383
month-over-month % change	-48.4%	11.2%	-7.3%	-11.2%	-7.0%	-22.4%	-0.3%	0.5%	1.3%		
year-over-year % change	-4.2%	8.1%	25.5%	-12.8%	7.0%	8.6%	5.0%	9.1%	13.8%	-7.3%	17.6%
Laboratories	0.147	0.046	0.106	0.100	0.095	0.100	0.175	0.176	0.181	2.067	2.043
month-over-month % change	61.6%	-68.4%	121.1%	0.7%	-5.6%	5.0%	-1.7%	5.0%	-1.1%		
year-over-year % change	-72.8%	32.7%	144.3%	-60.6%	-59.4%	-51.6%	-1.1%	-7.7%	-0.9%	-8.2%	-1.2%
Warehouse	0.780	0.933	0.695	1.374	0.963	0.803	1.074	1.023	0.931	11.212	10.272
month-over-month % change	-33.5%	19.6%	-25.5%	2.2%	-30.0%	-16.6%	-0.9%	-4.7%	-9.0%		
year-over-year % change	-12.6%	-39.6%	-61.4%	0.2%	-12.0%	-43.2%	36.1%	18.6%	-4.4%	60.4%	-8.4%
Misc Commercial	0.730	0.637	1.119	0.583	0.621	0.829	1.073	1.010	1.044	12.186	11.540
month-over-month % change	47.5%	-12.8%	75.7%	-56.1%	6.5%	33.5%	1.2%	-5.9%	3.4%		
year-over-year % change	-27.8%	-54.4%	57.9%	-27.8%	-27.8%	-71.1%	-11.3%	-17.3%	-1.7%	20.3%	-5.3%
<b>TOTAL COMMERCIAL</b>	7.096	7.932	7.430	9.197	8.514	7.484	9.471	9.447	9.437	93.705	105.077
month-over-month % change	-32.5%	11.8%	-6.3%	-19.2%	-7.4%	-12.1%	-3.1%	-0.3%	-0.1%		
year-over-year % change	-33.7%	-3.6%	-1.6%	-4.6%	-4.8%	-15.2%	14.1%	13.3%	11.5%	5.2%	12.1%
<b>TOTAL INDUSTRIAL (Manufacturing)</b>	0.402	0.632	0.301	0.691	0.801	0.445	0.790	0.833	0.843	11.195	9.177
month-over-month % change	-70.6%	57.1%	-52.4%	5.2%	16.0%	-44.4%	0.4%	5.5%	1.2%		
year-over-year % change	10.8%	477.2%	64.1%	17.3%	198.5%	103.6%	-29.5%	-21.3%	-11.7%	8.2%	-18.0%
Religious	0.137	0.129	0.145	0.120	0.123	0.137	0.125	0.123	0.127	1.475	1.395
month-over-month % change	33.0%	-4.2%	12.1%	0.7%	3.0%	11.1%	-2.2%	-1.1%	3.1%		
year-over-year % change	31.2%	-11.3%	45.7%	10.6%	10.2%	17.6%	-3.7%	-6.7%	-4.3%	9.9%	-5.4%
Hospitals/Clinics	1.613	0.983	1.496	1.602	1.309	1.364	1.528	1.491	1.470	14.408	16.550
month-over-month % change	21.1%	-39.1%	52.2%	-13.6%	-18.3%	4.2%	4.5%	-2.4%	-1.4%		
year-over-year % change	97.6%	-31.0%	-14.4%	-2.0%	16.0%	2.6%	20.9%	15.1%	11.5%	13.1%	14.9%
Nursing/Assisted Living	0.454	0.871	0.725	0.602	0.623	0.683	0.557	0.591	0.613	4.847	6.871
month-over-month % change	-16.4%	91.7%	-16.8%	-3.4%	3.5%	9.7%	-2.2%	6.2%	3.6%		
year-over-year % change	-24.5%	-48.4%	53.6%	30.8%	24.5%	33.9%	32.1%	39.4%	40.6%	24.7%	41.8%
Libraries/Museums	0.208	0.206	0.093	0.14	0.179	0.169	0.213	0.216	0.213	2.367	2.416
month-over-month % change	68.7%	-0.7%	-54.7%	-40.8%	9.0%	-5.5%	-10.0%	3.0%	-2.8%		
year-over-year % change	-57.8%	57.5%	-43.8%	-50.9%	-47.3%	-35.7%	0.7%	3.7%	-1.2%	12.0%	2.1%
Fire/Police/Courthouse/Prison	0.350	0.687	0.344	0.492	0.517	0.460	0.483	0.509	0.485	5.759	5.456
month-over-month % change	-32.1%	96.4%	-49.9%	-15.9%	5.1%	-11.0%	-2.2%	5.3%	-4.7%		
year-over-year % change	-26.7%	80.6%	-45.7%	-22.6%	25.3%	-7.4%	-0.9%	2.9%	-6.7%	64.2%	-5.3%
Military	0.805	1.248	0.702	0.643	0.783	0.918	0.510	0.523	0.525	5.478	5.940
month-over-month % change	173.1%	54.9%	-43.7%	30.5%	21.7%	17.2%	1.6%	2.4%	0.4%		
year-over-year % change	13.6%	13.6%	3.5%	12.4%	-4.5%	10.9%	4.3%	2.0%	12.1%	-48.6%	8.4%
Schools/Colleges	3.450	4.981	3.575	5.281	4.798	4.002	5.333	5.439	5.383	54.757	60.557
month-over-month % change	-42.2%	44.4%	-28.2%	-19.2%	-9.1%	-16.6%	-0.7%	2.0%	-1.0%		
year-over-year % change	-11.6%	34.2%	-15.7%	3.0%	11.0%	1.3%	3.7%	9.5%	6.9%	4.0%	10.6%
Misc Medical	0.422	0.715	0.483	0.540	0.533	0.540	0.352	0.399	0.426	2.904	4.707
month-over-month % change	-8.2%	69.4%	-32.5%	12.7%	-1.4%	1.4%	7.6%	13.3%	6.9%		
year-over-year % change	238.4%	365.5%	-15.0%	136.4%	3.2%	275.5%	25.3%	44.3%	67.4%	14.3%	62.1%
<b>TOTAL INSTITUTIONAL</b>	7.439	9.820	7.562	9.445	8.866	8.274	9.101	9.294	9.241	91.994	103.892
month-over-month % change	-20.3%	32.0%	-23.0%	-13.9%	-6.1%	-6.7%	0.2%	2.1%	-0.6%		
year-over-year % change	3.0%	30.9%	-7.7%	3.8%	13.3%	8.3%	8.0%	11.8%	10.2%	2.9%	12.9%
Misc Non Residential	0.533	0.701	0.535	0.651	0.618	0.590	0.640	0.659	0.669	4.373	7.591
month-over-month % change	-14.0%	31.5%	-23.7%	-14.2%	-5.1%	-4.6%	2.7%	2.9%	1.6%		
year-over-year % change	62.6%	45.7%	29.8%	45.5%	31.5%	44.9%	69.9%	67.7%	71.1%	19.9%	73.6%
<b>TOTAL NON-RES BUILDING</b>	15.471	19.086	15.829	19.984	18.799	16.795	20.002	20.232	20.190	201.267	225.737
month-over-month % change	-29.2%	23.4%	-17.1%	-15.9%	-5.7%	-10.7%	-1.3%	1.2%	-0.2%		
year-over-year % change	-16.9%	16.9%	-3.1%	1.0%	7.4%	-1.7%	9.8%	11.8%	11.0%	4.6%	12.2%
Airports	0.561	0.958	0.437	1.115	1.181	0.652	0.520	0.531	0.547	4.409	6.515
month-over-month % change	-72.3%	70.7%	-54.3%	3.5%	5.9%	-44.8%	-11.6%	2.1%	3.0%		
year-over-year % change	-59.3%	15.7%	77.3%	45.1%	24.7%	-20.2%	55.1%	40.9%	47.5%	-38.9%	47.8%
Roads/Highways	4.229	4.692	3.116	4.754	4.761	4.012	4.327	4.421	4.375	48.025	49.192
month-over-month % change	-21.1%	11.0%	-33.6%	-5.4%	0.1%	-15.7%	0.2%	2.2%	-1.0%		
year-over-year % change	2.9%	31.8%	-15.0%	-10.2%	3.2%	6.2%	0.7%	3.5%	1.9%	9.8%	2.4%
Bridges	1.579	1.113	0.968	1.249	1.218	1.220	1.222	1.245	1.217	11.298	13.232
month-over-month % change	64.4%	-29.5%	-13.0%	0.2%	-2.5%	0.2%	5.1%	1.9%	-2.3%		
year-over-year % change	81.4%	33.5%	-25.9%	34.5%	35.5%	21.5%	24.4%	23.2%	17.3%	10.3%	17.1%
Dams/Marine	0.174	0.516	0.323	0.296	0.352	0.338	0.368	0.340	0.325	5.537	3.529
month-over-month % change	-52.3%	197.1%	-37.4%	-23.8%	18.6%	-3.9%	-6.7%	-7.7%	-4.3%		
year-over-year % change	-64.4%	-39.6%	-34.9%	-33.3%	-41.5%	-44.9%	-26.9%	-34.3%	-35.7%	21.9%	-36.3%
Water/Sewage	3.132	2.539	1.763	2.999	2.870	2.478	2.589	2.582	2.547	26.614	28.505
month-over-month % change	6.5%	-18.9%	-30.6%	1.8%	-4.3%	-13.7%	1.5%	-0.3%	-1.4%		
year-over-year % change	17.6%	-3.2%	-19.4%	1.8%	1.9%	-0.5%	8.3%	6.7%	4.8%	14.1%	7.1%
Misc Civil (Power, etc.)	0.673	1.182	0.970	1.366	0.827	0.941	1.388	1.344	1.312	18.514	14.134
month-over-month % change	7.3%	75.7%	-17.9%	-20.3%	-39.5%	13.8%	-9.6%	-3.2%	-2.4%		
year-over-year % change	-72.4%	-31.1%	-28.1%	-34.6%	-60.8%	-48.6%	-16.1%	-21.3%	-21.5%	11.7%	-23.7%
<b>TOTAL ENGINEERING (Civil)</b>	10.347	11.000	7.577	11.780	11.208	9.641	10.414	10.463	10.323	114.398	115.107
month-over-month % change	-15.7%	6.3%	-31.1%	-3.1%	-4.9%						